



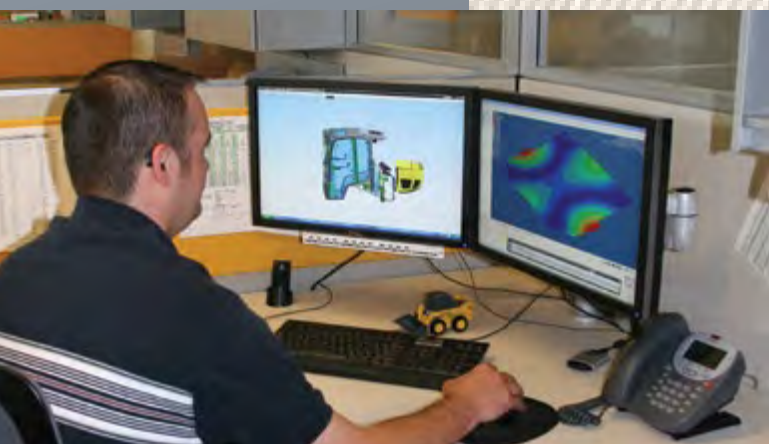
TRACK LOADERS

RADIAL-LIFT



1750RT NXT3 ▲ 2100RT NXT3

A LEGACY OF INNOVATION



WHAT BEGAN IN THE 19TH CENTURY AS AN AGRICULTURAL IMPLEMENT MANUFACTURER HAS GROWN INTO A 21ST CENTURY EQUIPMENT POWERHOUSE - MUSTANG COMPACT EQUIPMENT.

Known in the early years as the Owatonna Manufacturing Company, Mustang was among the first to make what is known today as the skid steer loader. Since that time, Mustang has combined old-school experience with innovative processes to offer one of the broadest lines of compact equipment available today.

MUSTANG. THE ORIGINAL WORKHORSE.



BLAZING A NEW TRAIL

Since breaking into the track loader market in 2001, Mustang has learned a thing or two about what it takes to be an industry leader. Combine this expertise with input from some of the market's heaviest track loader users, and you get the RT Series Track Loaders from Mustang.

With many industry-exclusive features, including the patented Fold-Up Door and IdealTrax™ Automatic Track Tensioning System, the 1750RT NXT3 and 2100RT NXT3 will blaze a new trail in the track loader market.

IdealTrax™

RT SERIES: NXT3

1750RT
NXT32100RT
NXT3**MUSTANG**

PERFORMANCE

▲ POWER and ▲ PERFORMANCE

ROUGH GROUND - YOU HAVE MET YOUR MATCH

INCREASED BREAKOUT FORCES NXT3 ENHANCEMENT

Enhanced breakout forces on the NXT3 models make these machines your greatest allies on the job.

	TILT	LIFT
1750RT NXT3	2429 kg	2275 kg
2100RT NXT3	3008 kg	2940 kg

IDEALTRAX™ INDUSTRY-EXCLUSIVE AUTOMATIC TRACK TENSIONING SYSTEM

Eliminate weekly tension checks and costly track replacements with the IdealTrax™ system. Tracks are automatically tensioned when the engine is started and during operation.



FOLD-UP DOOR NXT3 ENHANCEMENT

This patented new design provides cab-to-canopy versatility, all while maintaining low clearance and a Level II FOPS certification.



TIER IV YANMAR DIESEL ENGINES

	POWER	TORQUE
1750RT NXT3	69.9 hp (52.1 kW)	242.7 Nm
2100RT NXT3	72 hp (53.7 kW)	279.3 Nm

RATED OPERATING CAPACITY

1750RT NXT3	794 kg
2100RT NXT3	953 kg





DEDICATED, WELDED TRACK LOADER CHASSIS

Custom built to aid in superior weight distribution, which enhances stability, grading, tractive effort, and ride control.



COUNTERWEIGHT/BUMPER

Gain extra tipping capacity while offering increased rear protection.

Optional on the 1750RT NXT3 and 2100RT NXT3.

GROUND CLEARANCE CLASS-LEADING

1750RT NXT3	343 mm
2100RT NXT3	335 mm

HORSEPOWER MANAGEMENT SYSTEM

Monitors and adjusts the hydrostatic drive pump to produce the ideal tractive effort.

LIFT HEIGHT CLASS-LEADING

1750RT NXT3	3251 mm
2100RT NXT3	3251 mm



OPTIMIZED RADIAL LIFT ARM

Durable design provides increased strength and up to 3251 mm of lift height – higher than any competitor in their respective weight class.

STRAIGHT TRACKING

This feature provides for in-cab, tool-free adjustment of individual track speeds, ensuring the machine drives straight.



OPERATOR STATION

▲ COMFORT and ▲ SAFETY

OPERATOR STATION COMFORT FEATURES



WITHIN REACH

Lights, windshield wiper, and all other controls conveniently located on the armrests.



RADIO OPTION

Factory-installed, this AM/FM deluxe radio option customizes the cab.



CLIMATE CONTROL

Heat is standard on all cab models. Upgrade to air conditioning for additional comfort.



INTEGRATED LCD DISPLAY

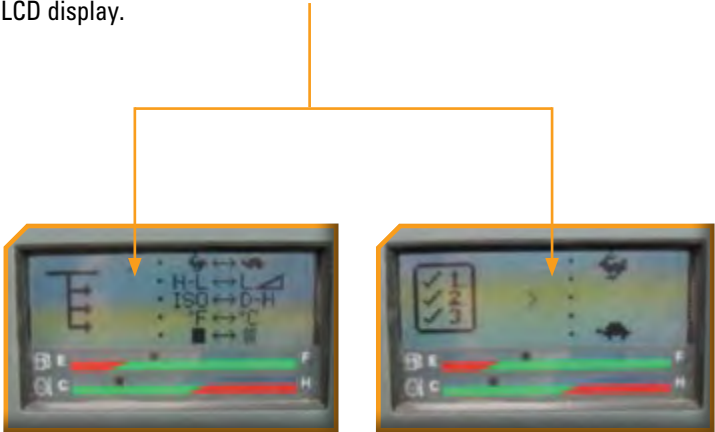
Easy-to-use, multi-function display incorporates all warning/operation lights and machine configuration screens. Single button allows for simple scrolling and selection of various display functions.

STRAIGHT TRACKING

Tracking is easily corrected from the cab using the display. It can also be used to compensate for offset or side-loaded attachments.

DRIVE SENSITIVITY ADJUSTMENT

Five settings are available to adjust the operator drive speeds and response times. Each user can customize the control to their preference using the LCD display.



Drive Sensitivity Adjustment	Operator Feel Emulation
5 - Rabbit	+ 20% = Fastest <ul style="list-style-type: none">Highly ResponsiveHighest Volume
4 - ●	+ 10% = Quick <ul style="list-style-type: none">Very ResponsiveControl
3 - ●	Standard Setting <ul style="list-style-type: none">Normal Response TimeFocused Productivity
2 - ●	- 10% = Precision <ul style="list-style-type: none">Improved Control
1 - Turtle	- 20% = High Precision <ul style="list-style-type: none">Easy ControlMore Precise





ELECTRIC ATTACHMENT CONTROL

This factory-installed option controls multi-function attachments directly through the joystick.

PREMIUM SEAT

Standard deluxe, high-back mechanical suspension seat or an optional air-ride seat for operator comfort.

OPERATOR PRESENCE

Brakes are applied and hydraulics are disabled whenever the operator raises the restraint bar, leaves the seat or switches off the ignition.

CREATURE COMFORTS

Dome light, cup holder, two 12-volt outlets, and multiple adjustable air vents.

VISIBILITY

A cab-forward design enhances the view to the bucket cutting edge from the operator's seat. Extra-large side screens, combined with a low-profile lift arm design, provide a wide field-of-view to the side work areas.

PRESSURIZED CAB

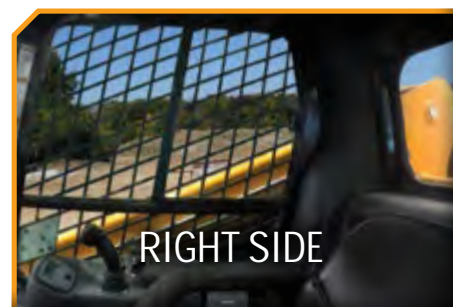
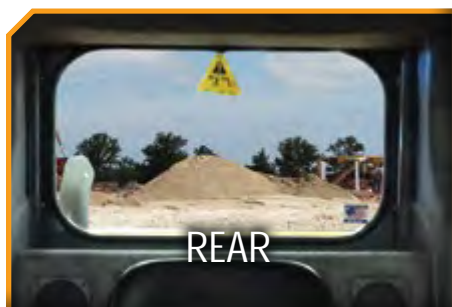
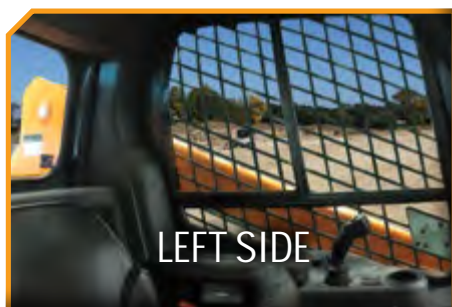
Optional, pressurized sealed cab enclosure with sound reduction material and large, rear-mounted cabin air filter provides a cleaner and quieter operating environment.

ARMRESTS/RESTRAINT BARS

All instrumentation and fully adjustable joystick control towers are conveniently located on the armrests for easy access. High-mounted restraint bars provide ample clearance for the operator's legs.

SERVICE & SAFETY

▲ MAINTENANCE and ▲ SAFETY



EXCELLENT VIEWS FROM ALL SIDES FOR SAFETY AND PRECISE OPERATION

Excellent visibility to the front, sides and rear of the machine allow for precise placement of loads and reduced jobsite incidents. A high-mounted seat provides an excellent vantage point to the attachment and cutting edge.



LESS DOWNTIME PUTS MONEY IN YOUR POCKET

IDEALTRAX™ INDUSTRY-EXCLUSIVE AUTOMATIC TRACK TENSIONING SYSTEM

Eliminates the need for manually tensioning the tracks on the loader before operation, saving valuable time on the jobsite.

Increases the life of the tracks (up to 15%* in tested conditions), sprockets and bearings by ensuring the proper tension immediately upon start-up and during use, and tension release when the machine is shut down.

Track changes in the field are facilitated with a simple switch in the rear compartment. Removing a track without the IdealTrax™ system can take up to one hour per track. With IdealTrax™, it takes just minutes.

*Track life improvement varies greatly depending on conditions, application and upkeep; results may vary.

IdealTrax™



ENGINE NOT RUNNING

17-TOOTH SPROCKETS NXT3 ENHANCEMENT

17-tooth, forged drive sprockets have 40% more hardness depth for improved sprocket life. Larger sprockets increase track-to-chassis clearance, so tracks can be cleaned out with ease.



ENGINE RUNNING



ENGINE ACCESS

Full access to filters and reservoirs for servicing and maintenance is made possible by a swing-out rear door and a large, lockable engine cover.

TILTABLE ROPS/FOPS ASSEMBLY

Featuring gas-spring assist for easy internal access to the pumps, hydraulic valve bank and drive motors.

SAFETY RESTRAINT

Innovative restraint allows for secure positioning of the cab in the maintenance position. Restraint can be secured in position by one person.

TILT-OUT FOOT POD

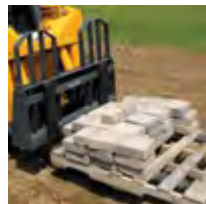
This feature allows for best-in-class foot well cleanout and provides perfect access to the fuel tank and other components under the cab.

MARKETS & ATTACHMENTS

▲ ATTACHMENTS

NEED VERSATILITY?

Compatible with most allied loader attachments, the RT Series Track Loaders from Mustang provide superior loader functionality while minimizing damage to ground surfaces. Perfect for landscape, agriculture, construction or rental - these machines are up for any challenge.



▲ Available accessories

				RT 175	RT 210
FORKS	PALLET FORKS	Acronym	Width (mm)	Capacity	
		CAT 1210 / 1200	1212	193 kg	▲ ▲
CONSTRUCTION	STANDARD BUCKET*				
		BS 1680 / 670	1680	670 l	▲
		BS 1760 / 700	1760	700 l	▲
		BS 1850 / 740	1850	740 l	▲
		BS 2140 / 870	2140	870 l	▲
	4 IN 1 BUCKET*				
		BU 1680 / 790	1680	790 l	▲
		BU 1760 / 830	1760	830 l	▲
		BU 1850 / 870	1850	870 l	▲
		BU 2140 / 1020	2140	1020 l	▲
	DOZER BLADE				
		BLD 1980	1980	270 kg	▲
		BLD 2135	2135	345 kg	▲
	UTILITY BUCKET*				
		BU 1680 / 790	1680	790 l	▲
		BU 1760 / 830	1760	830 l	▲
		BU 1850 / 870	1850	870 l	▲
		BU 2140 / 1020	2140	1020 l	▲
INDUSTRY	INDUSTRIAL GRAPPLE BUCKET*				
		BGI 1680 / 500	1680	500 l	▲
		BGI 1850 / 550	1850	550 l	▲
		BGI 2140 / 630	2140	630 l	▲
	HD DEMOLITION & SHIP TRIMMING BUCKET*				
		BD 1680 / 420	1680	420 l	▲
		BD 1760 / 530	1760	530 l	▲
		BD 1850 / 590	1850	590 l	▲
		BD 2140 / 870	2140	870 l	▲
MUNICIPALITIES	SNOW BLADE				
		BLS 2100	2100	350 kg	▲
		BLS 2400	2400	410 kg	▲
	SNOW BLOWER				
		SBL 1800	1210	480 kg	High flow
		SBL 2100	1210	540 kg	High flow
	BROOM BUCKET				
		SCB 1930	1680	▲	▲
AGRICULTURE	LIGHT MATERIAL BUCKET*				
		BLM 1850 / 1100	1850	1100 l	▲
		BLM 2350 / 1370	2350	1370 l	▲
	FARM FORKS WITH GRAPPLE				
		FMG 1680 / 600	1680	600 l	▲
		FMG 1760 / 620	1760	620 l	▲
		FMG 1850 / 640	1850	660 l	▲
		FMG 2140 / 760	2140	760 l	▲

* 400HB cutting edge standard



BEST SELLERS

GET ATTACHED



MULTI-TACH®

All models feature the easy-to-use All-Tach® (universal-style) attachment mounting system compatible with most allied attachments.

- **SINGLE LEVER DESIGN**
for simplicity and strength.
- **HEAVY DUTY MOUNTING PLATE**
design for increased rigidity over tube style.



POWER-A-TACH®

Power-A-Tach® all-weather system option allows users to quickly install and remove attachments. An operator leaves the seat only to connect auxiliary hydraulics. This system is compatible with most allied attachments.



○ STANDARD ● OPTIONAL

1750RT
NXT3

2100RT
NXT3

PERFORMANCE

All-Tach® Mounting System	○	○
IdealTrax™ Automatic Track Tensioning System	○	○
Straight Tracking	○	○
Power-A-Tach® Mounting System	●	●
Self-Leveling Hydraulic Lift Action	○	○
Selectable Self-Leveling Lift Action	●	●
Two-speed Hydrostatic Drive System	○	○
Horsepower Management System	○	○

ENGINE

Engine Alert System with Error Display	○	○
Engine Automatic Shutdown System	○	○
Glowplugs Starter Assist	○	○
Dual-Element Air Cleaner with Indicator	○	○

HYDRAULICS

Auxiliary Hydraulics	○	○
High-Flow Auxiliary Hydraulics	●	●

UNDERCARRIAGE

Elevated Planetary Final Drives	○	○
Maintenance Free Rollers Each Side	3	4
Single Flange Front/Dual Flange Rear Idlers	○	○
Rubber Track Undercarriage System	○	○
Servo-Controlled Hydrostatic Drive	○	○
Dedicated Undercarriage	○	○

STRUCTURE

Tilt-out Foot Pod	○	○
Back-up Alarm	○	○
Combination Radiator & Hydraulic Oil Cooler	○	○
ROPS/FOPS Level II Overhead Guard	○	○
Anti-Vandalism Lock Provisions	○	○
Mechanical Lift Cylinder Lock	○	○

OPERATOR STATION

Pressurized Cab Enclosure with A/C	●	●
Fold-Up Door or Swing Out Door	●	●
Multi-Function Function Display Screen	○	○
Drive Sensitivity Adjustment	○	○
Electronic Attachment Control - 14-Pin Connector	●	●
Electro-Hydraulic Joystick Controls	○	○
Selectable Control Pattern Configuration (ISO / Dual-Hand)	●	●
Variable Speed Control, Selectable On & Off	●	●
Foot Throttle	○	○
Full-Suspension Seat	○	○
Air Suspension Seat	●	●

		1750RT NXT3	2100RT NXT3	
DIMENSIONS	A.	Overall Operating Height – Fully Raised (mm)	4267	4237
	B.	Height to Hinge Pin – Fully Raised (mm)	3251	3251
	C.	Reach – Fully Raised (mm)	876	876
	D.	Dump Angle – Fully Raised	40.2°	39°
	E.	Dump Height – Fully Raised (mm)	2489	2489
	F.	Maximum Rollback Angle – Fully Raised	102.5°	102.5°
	G.	Overall Height at ROPS (mm)	2103	2111
	H.	Overall Length w/ Bucket – Std. c-wt. (mm)	3658	3762
	I.	Overall Length w/o Bucket – Std. c-wt. (mm)	2814	2959
	J.	Specified Height (mm)	1715	1720
	K.	Reach at Specified Height (mm)	790	795
	L.	Dump Angle at Specified Height	75°	75°
	M.	Maximum Rollback Angle at Ground	30°	30°
	N.	Carry Position (mm)	208	208
	O.	Maximum Rollback Angle at Carry Position	31.6°	31.6°
	P.	Digging Position – Below Ground (mm)	23	16
	Q.	Angle of Departure with Std. c-wt.	30.4°	29.2°
	R.	Ground Clearance (mm)	333	335
	S.	Track Gauge (mm)	1313	1313
	T.	Track Shoe Width (mm)	320	450
	U.	Crawler Base (mm)	1392	1483
	V.	Overall Width – Less Bucket (mm)	1636	1765
	W.	Bucket Width (mm)	1674	1877
	X.	Clearance Radius – Front With Bucket (mm)	2322	2403
	Z.	Clearance Radius – Rear w/ Std. c-wt. (mm)	1577	1641
		Maximum Rollback at Specified Height	66.8°	66.8°
		Angle of Approach	90°	90°
		Grouser Height (mm)	25	25
CAPACITY		Operating Capacity at 35% Tipping Load (kg)	794	953
		Operating Capacity at 50% Tipping Load (kg)	1134	1361
		Tipping Load (kg)	2268	2722
		Operating Weight (kg)	3903	4445
ENGINE		Make/Model	Yanmar / 4TNV98C-NMSL Tier IV	Yanmar / 4TNV98CT-NMSL Tier IV
		Type	4-Stroke Naturally Aspirated	4-Stroke Turbo
		Displacement (L) / cylinders	3.3 / 4	3.3 / 4
		Gross Power (kW) @ rpm	69.9 hp (52.1) @ 2500	72 hp (53.7) @ 2500
		Net Power (kW) @ rpm	68.4 hp (51) @ 2500	70.7 hp (52.7) @ 2500
		Peak Torque (Nm) @ rpm	242.7 @ 1600	279.3 @ 1700
		Oil Pan Capacity (L)	10.4	10.4
		Alternator Voltage / Amperage	14V / 95A	14V / 95A
TRACK DRIVES		Drawbar Pull / Tractive Effort (kg)	4498	5211
		Track Type / Track Rollers / Roller Type	Rubber / 4 / Steel	Rubber / 5 / Steel
		Track Width (mm)	320	450
		Ground Pressure (bar)	0.43	0.32
FORCES		Bucket Breakout – Tilt Cylinder (kg)	2429	3008
		Bucket Breakout – Lift Cylinder (kg)	2275	2940
		Ground Speed – Single Speed (km/hr)	8.5	9.8
		Ground Speed – Two Speed (km/hr)	12.4	14.3
VOLUME		Fuel Tank (L)	91	91
		Hydraulic Reservoir Tank (L)	41.6	52.2
		Coolant Capacity (L)	13.3	14.4
HYDRAULICS		Auxiliary Hydraulic Flow – Rated Speed (L/min)	70.0	82.5
		High-Flow Hydraulic Flow – Rated Speed (L/min)	128.8	135.8
		Transmission Pump Type	Axial Piston	Axial Piston
		Motor Type	Axial Piston with Planetary Gear Box Reduction	
		Battery Volts	12V	12V
		Cold Cranking Amps at Temperature	850 CCA @ 0°F (-18°C)	850 CCA @ 0°F (-18°C)

ORIGINAL WORKHORSE

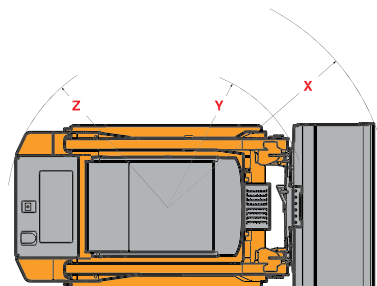
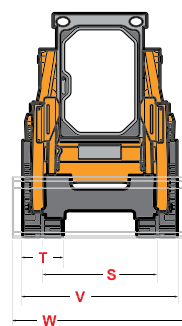
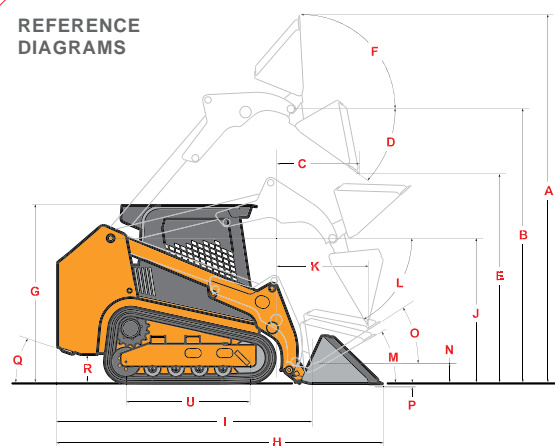
Mustang authorized dealers offer a full line of compact equipment, backed up by exceptional sales, service and parts experience.

Mustang reminds users to read and understand the operator's manual before operating any equipment. Also, make sure all safety devices and shields are in place and functioning properly.

Mustang reserves the right to add improvements or make changes in specifications at any time without notice or obligation.

For more information on
Mustang equipment, visit
mustangmfg.com

REFERENCE DIAGRAMS



MUSTANG